

FLOYD

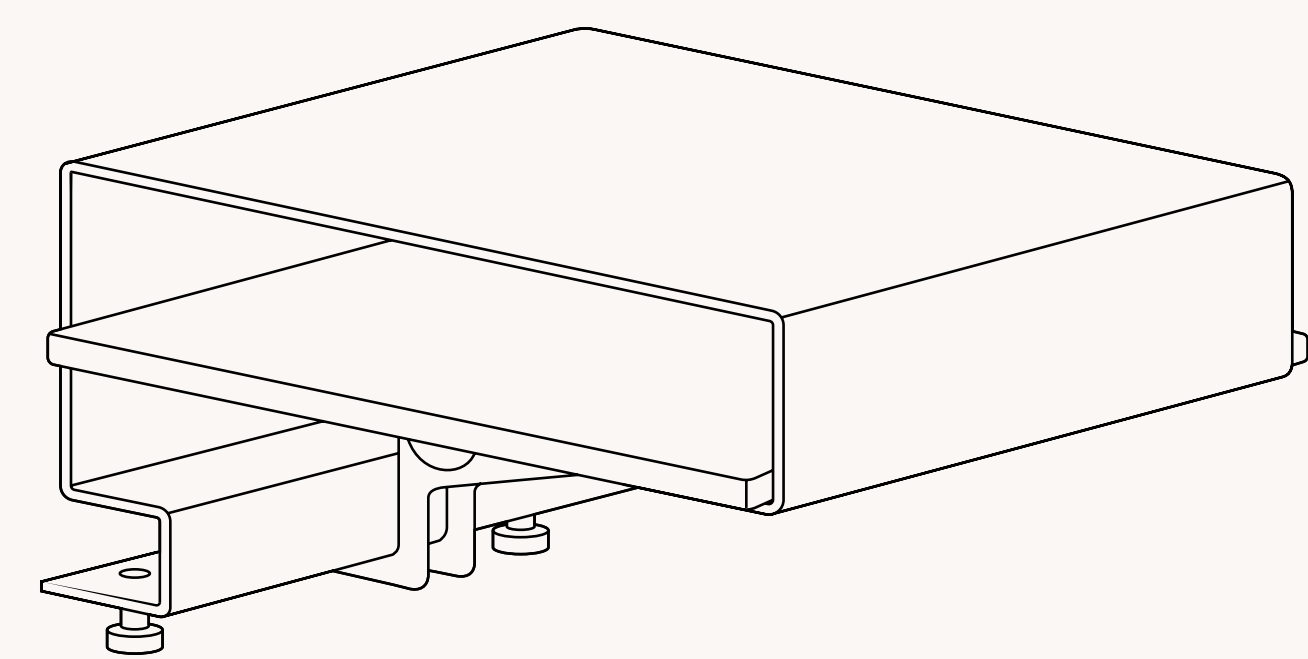
How to Assemble:

The Bedside Table (Powered)

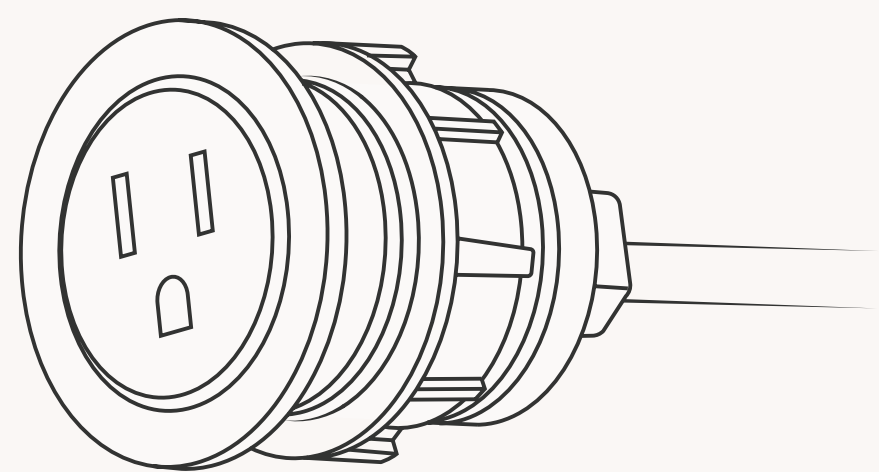
FLOYD

Components

1x Bedside Table



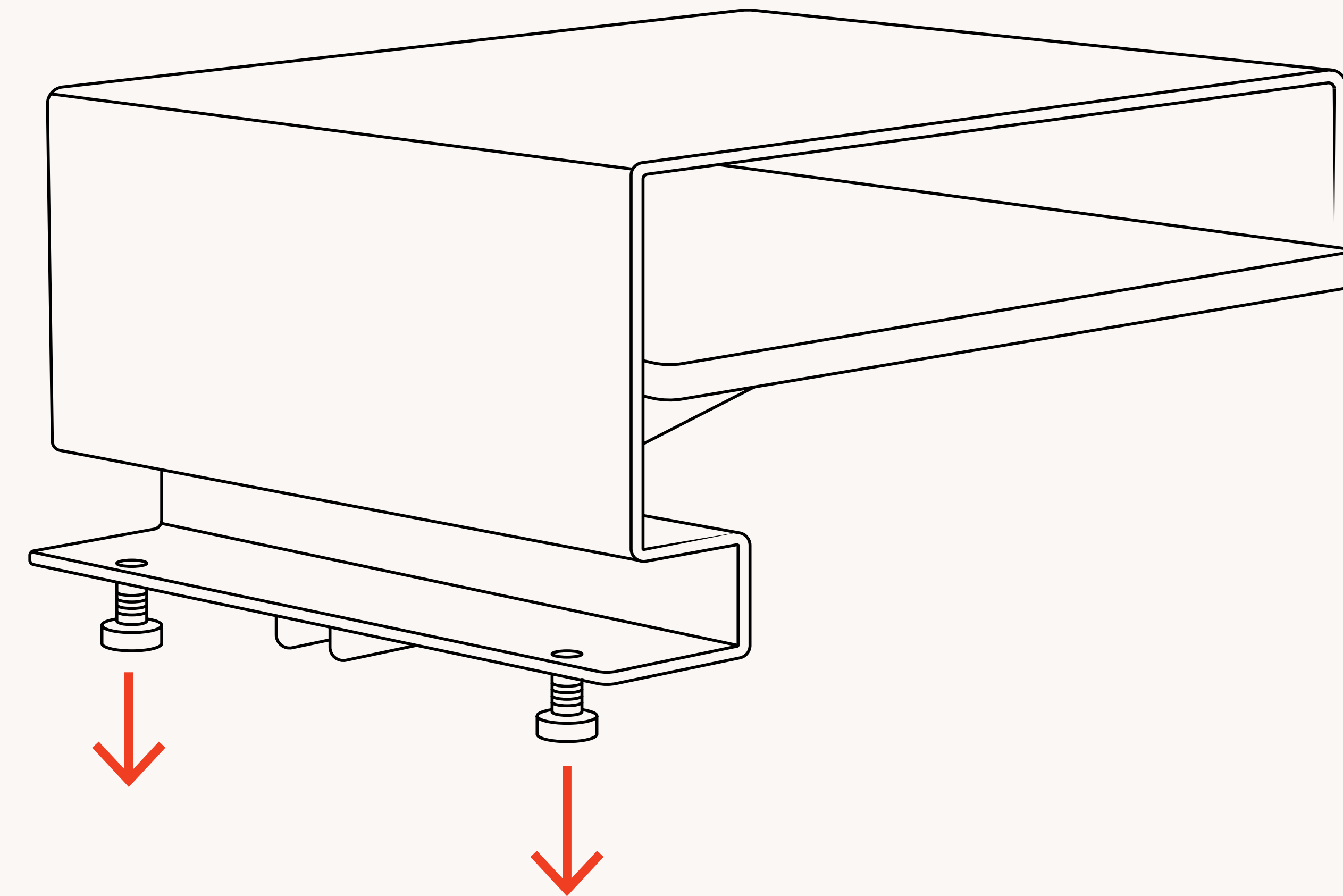
1x Byrne™ Powered Grommet



Pro Tip: If you're considering a return, save your packaging!

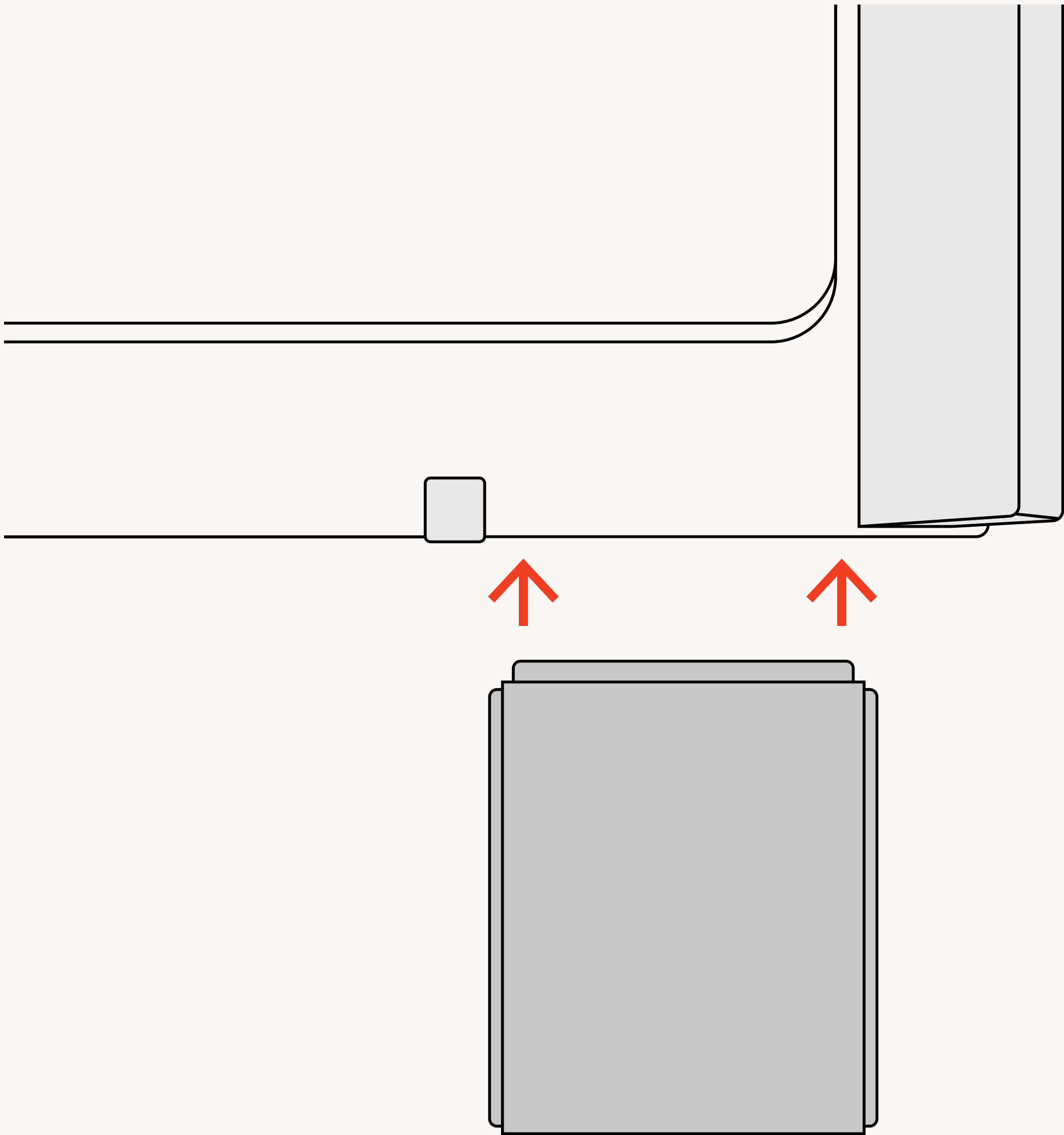
Step: 1 of 8

First, loosen the pre-attached thumbscrews.
Note: You do not need to completely remove the screws.



Step: 2 of 8

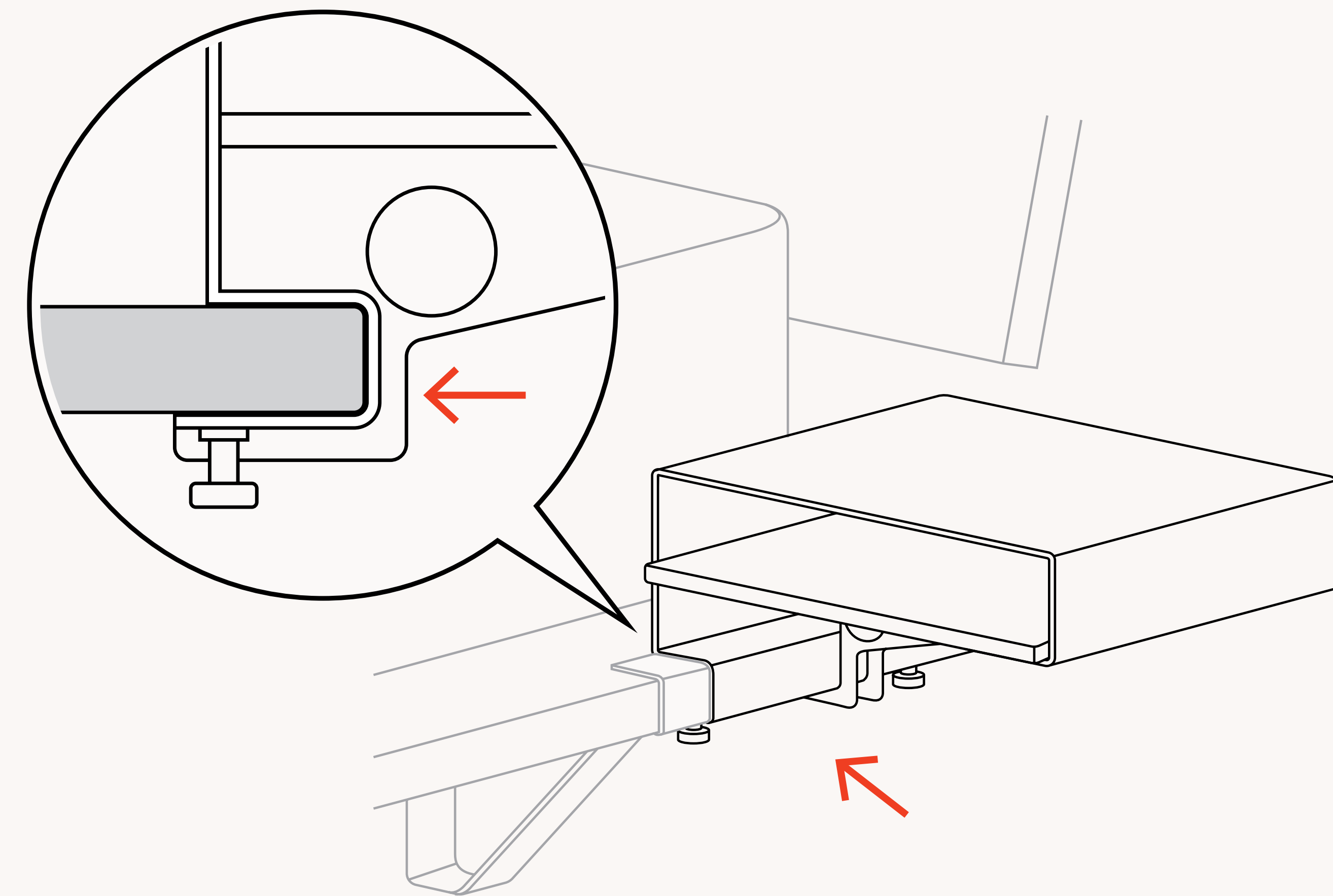
Choose a bed side then align the Bedside Table between the top of the bed panel and the first support.



Step: 3 of 8

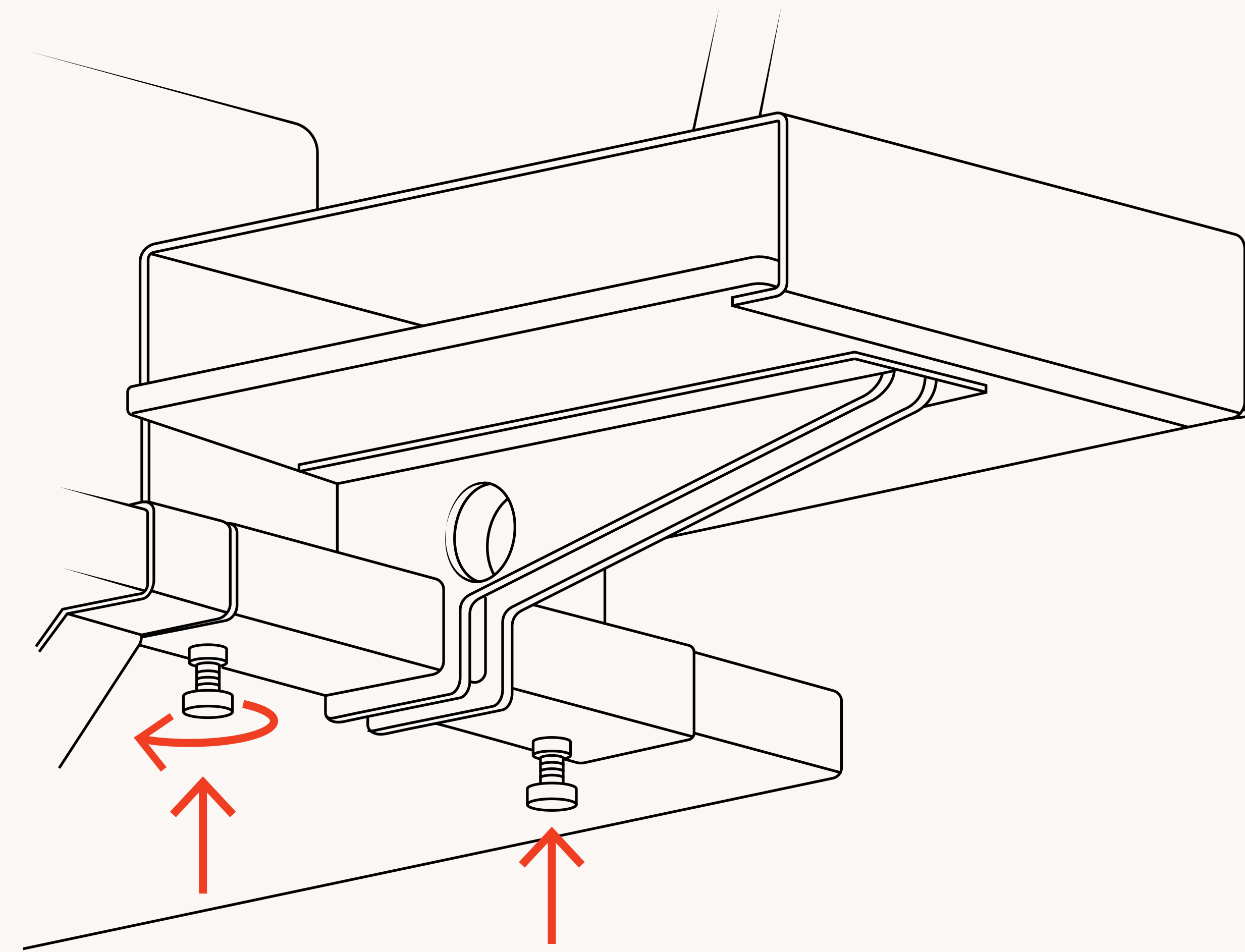
Attach the Bedside Table to the
Bed Panel.

**Make sure there is no gap space
between the table and the first support.**



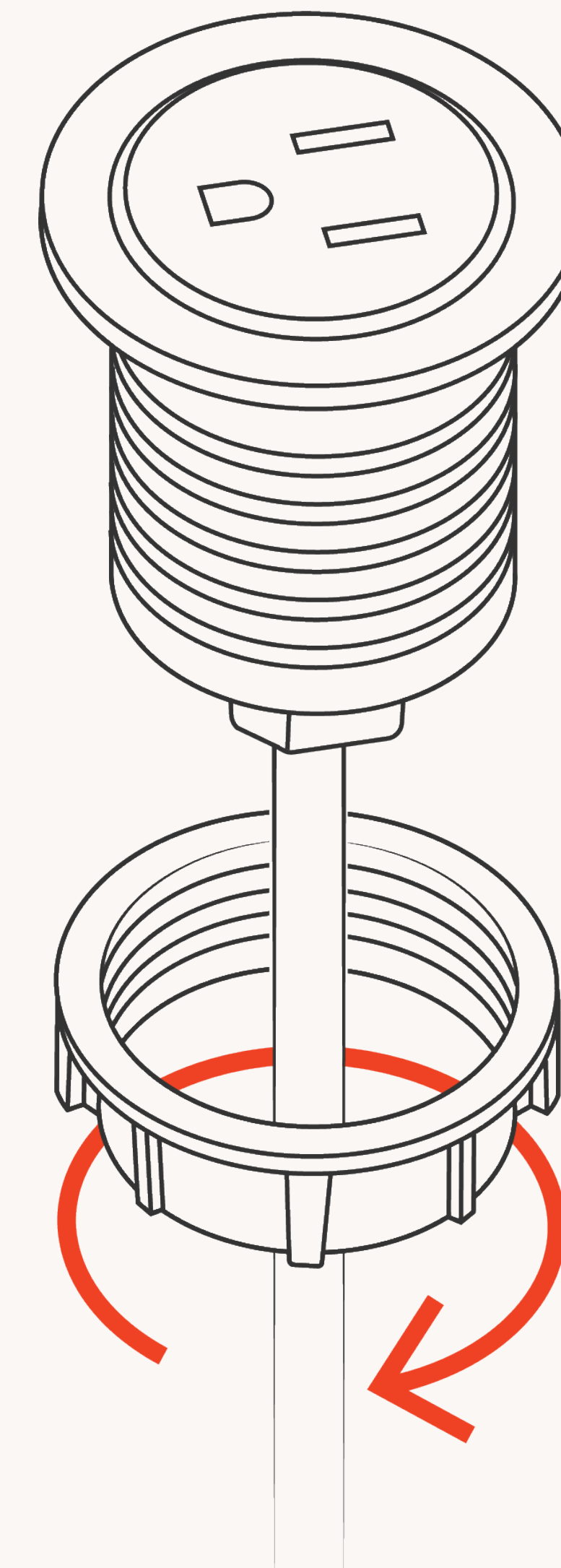
Step: 4 of 8

While holding the Table in place, reach under and tighten the thumbscrews to securely fasten the table to the bed panel.



Step: 5 of 8

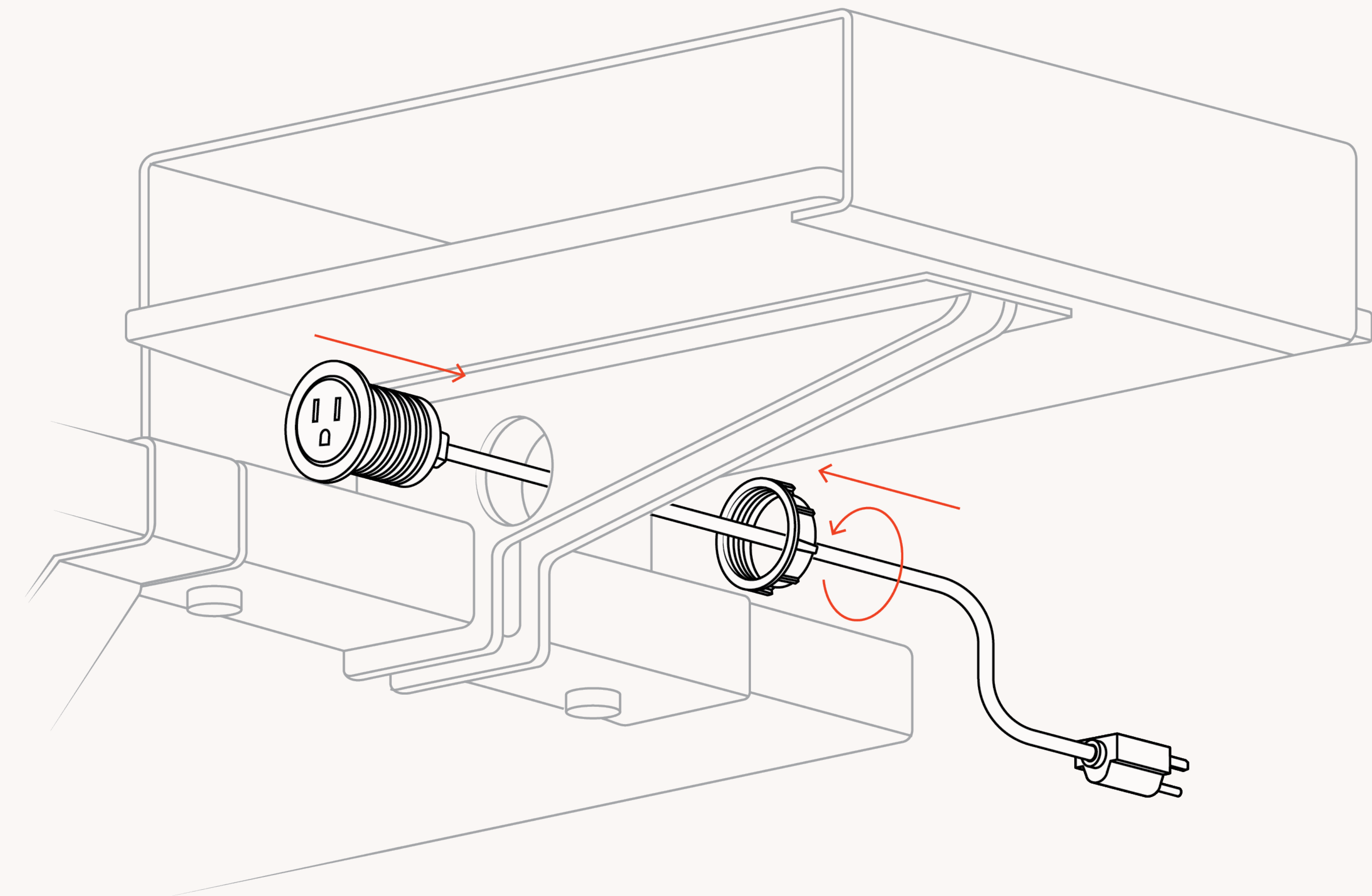
Completely remove the end cap
from the powered grommet.



Step: 6 of 8

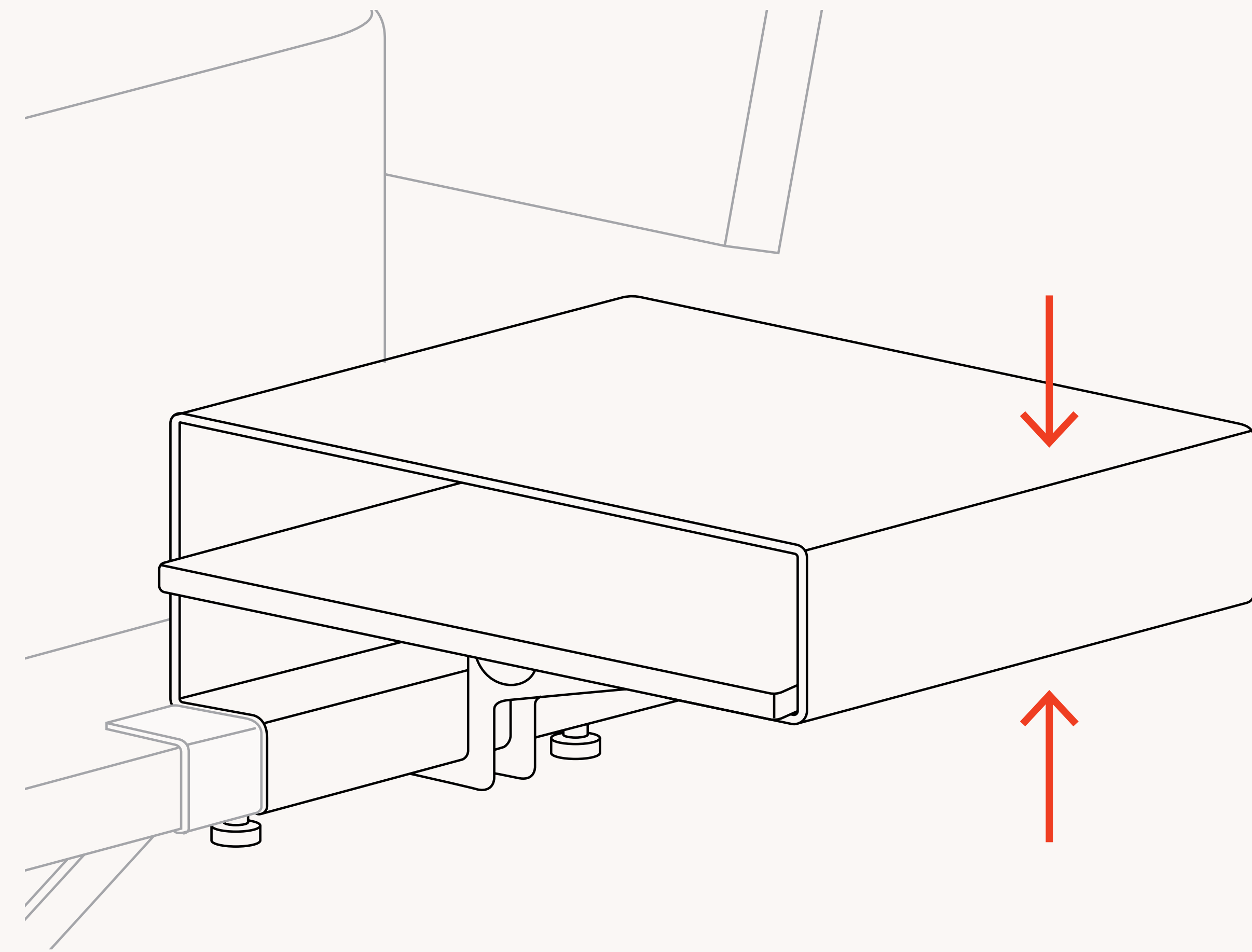
Starting with the cord, feed the Powered Grommet through the circular opening on the underside of the Table.

Reattach the endcap to the backside of the opening by feeding the cord through it and tighten in place to secure.



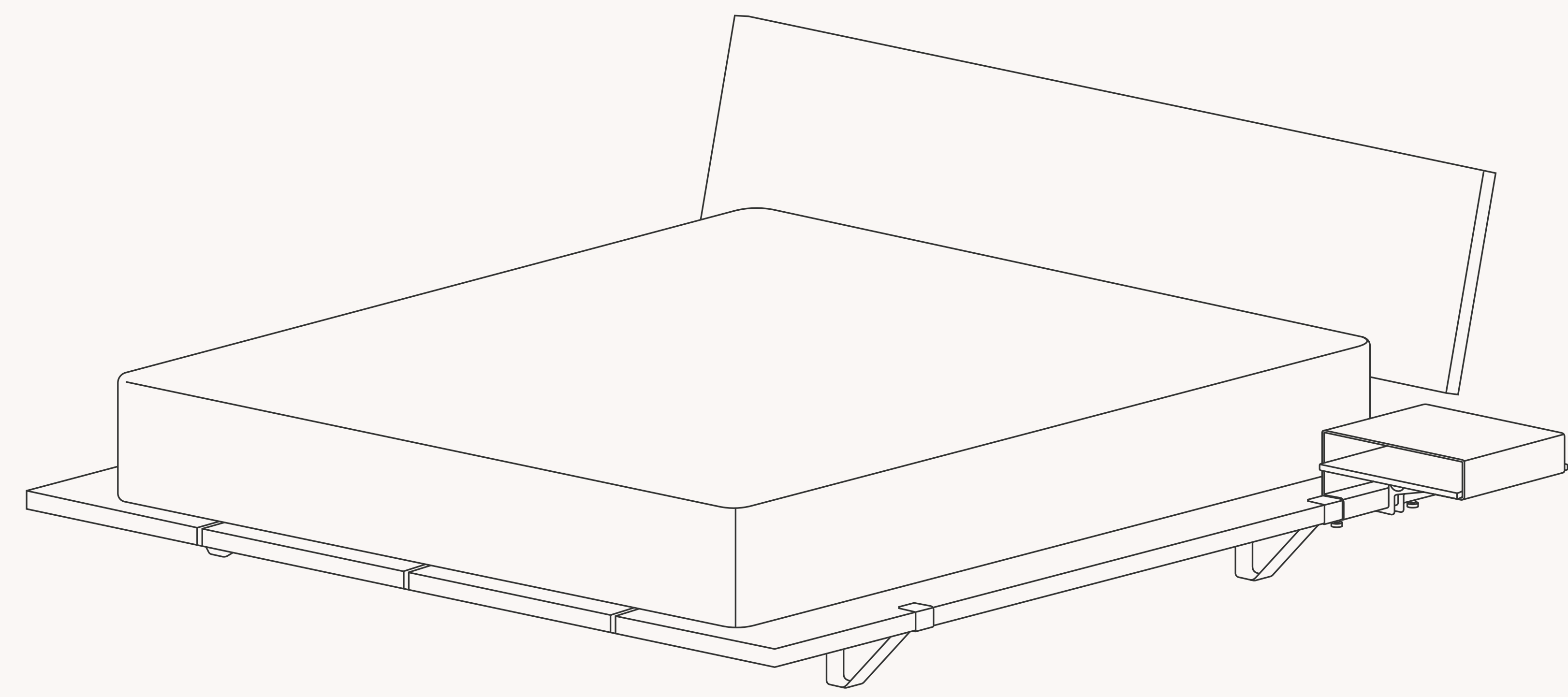
Step: 7 of 8

Before use ensure that the Bedside Table is stable.



Step: 8 of 8

Your Bedside Table is now ready to use!



FLOYD

WARNING ⚠

READ ALL INSTRUCTIONS **BEFORE** ASSEMBLY & USE. ADULT ASSEMBLY REQUIRED. KEEP SMALL PARTS AND PACKAGING AWAY FROM CHILDREN

NOTES ON USE:

Keep children and others safe by following these simple rules:

- Do not** allow any child to play on furniture
- Do not** allow climbing on any piece of furniture
- Do not** allow hanging from any piece of furniture

Assembly:

Use caution when assembling. Do not change the specifications or modify this product. Incorrect assembly can cause product to fail and cause damage or personal injury. Double check that product is assembled correctly and all components are properly tightened before use.

Usage:

Remove all packaging before first use.
Contact with live electrical voltage can cause serious injury and lead to death from electric shock. Failure to observe recommended practices can result in unsafe usage conditions and product damage or personal injury. Do not place outlet near open flames such as candles. Keep away from water. There is a risk of electric shock if any part of the outlet is submerged in water.
Only meant for indoor use.

Cleaning/Care:

Clean bedside table add-on with a dry or damp lint free cloth.

FLOYD